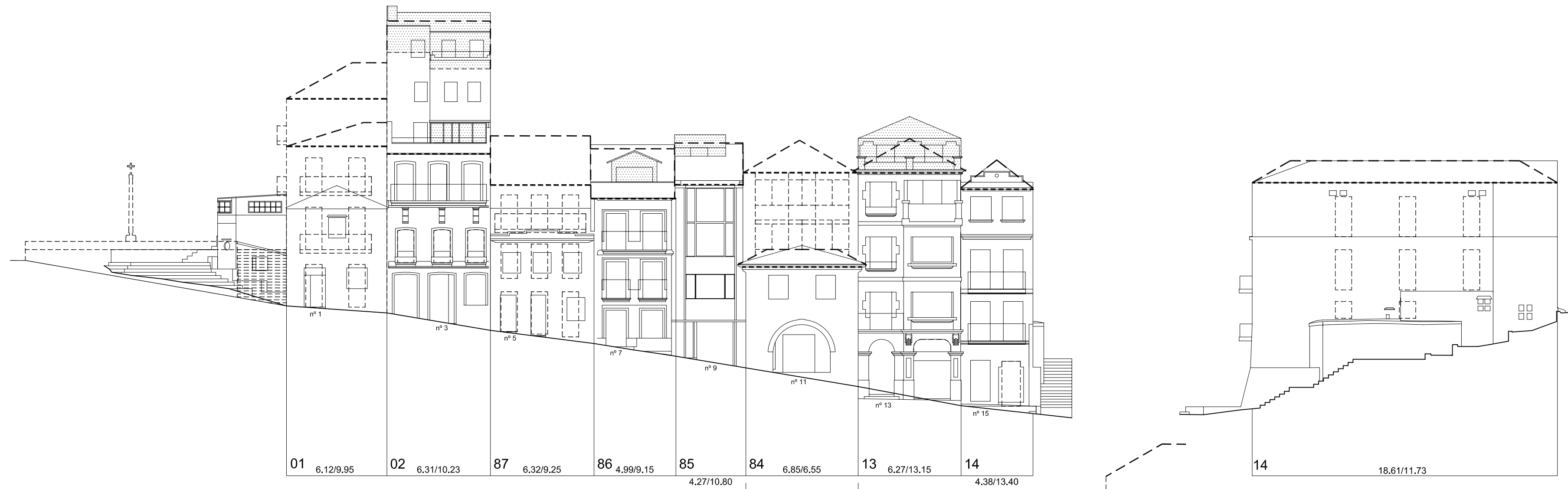
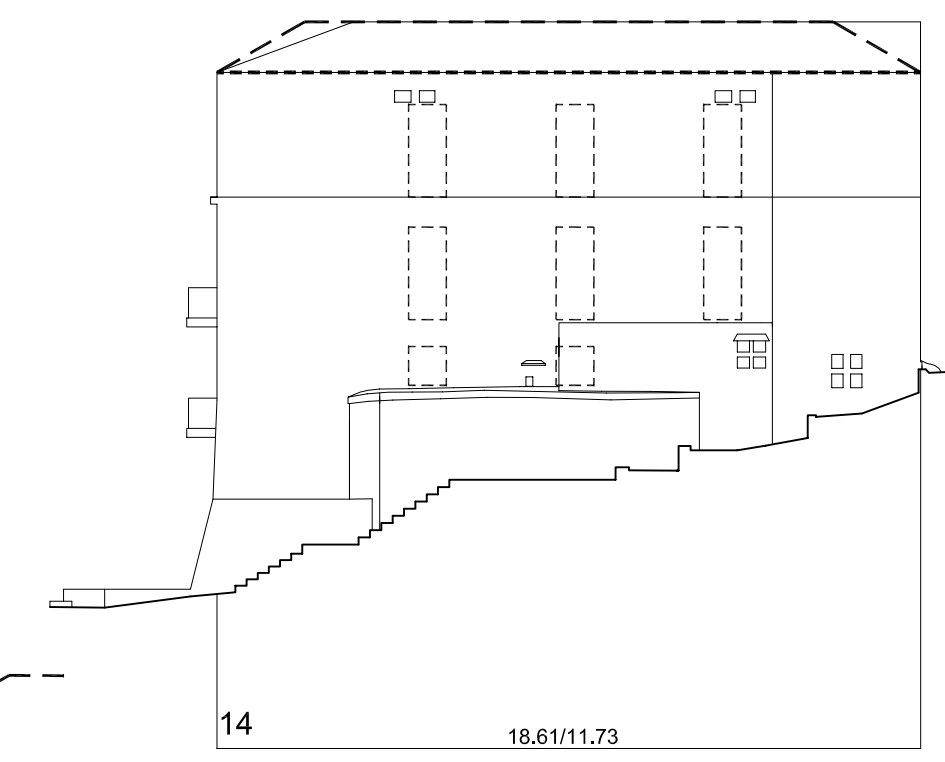


01 12.68/9.25



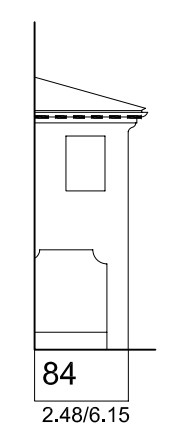
01 6.12/9.95 02 6.31/10.23 87 6.32/9.25 86 4.99/9.15 85 4.27/10.80 84 6.85/6.55 13 6.27/13.15 14 4.38/13.40

Rúa San Francisco

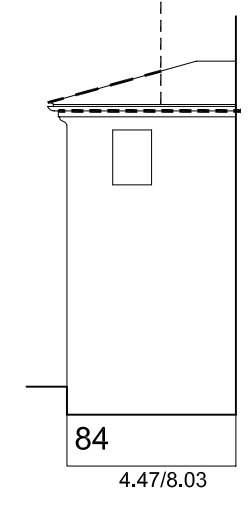


14 18.61/11.73

Rúa dos Poboadores



84 2.48/6.15

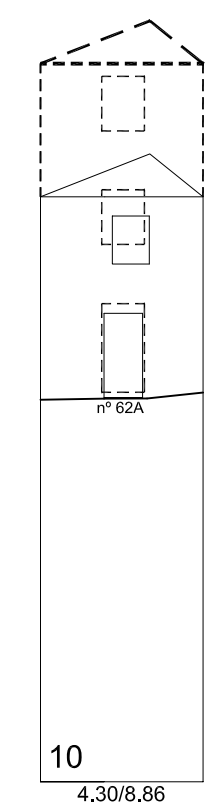


84 4.47/8.03



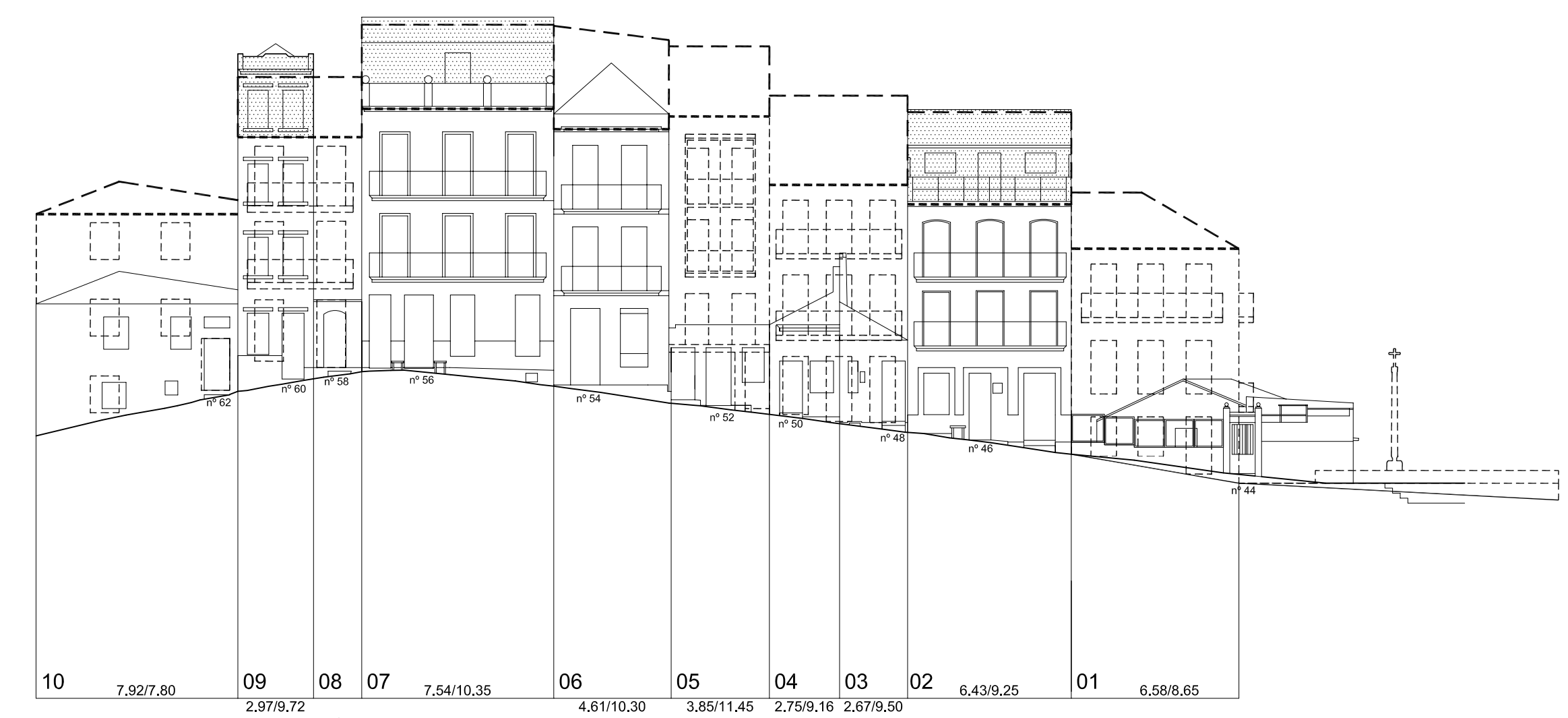
12 6.83/8.85 08 7.28/9.22 09 3.49/9.03 10 7.07/10.76

Rúa dos Poboadores



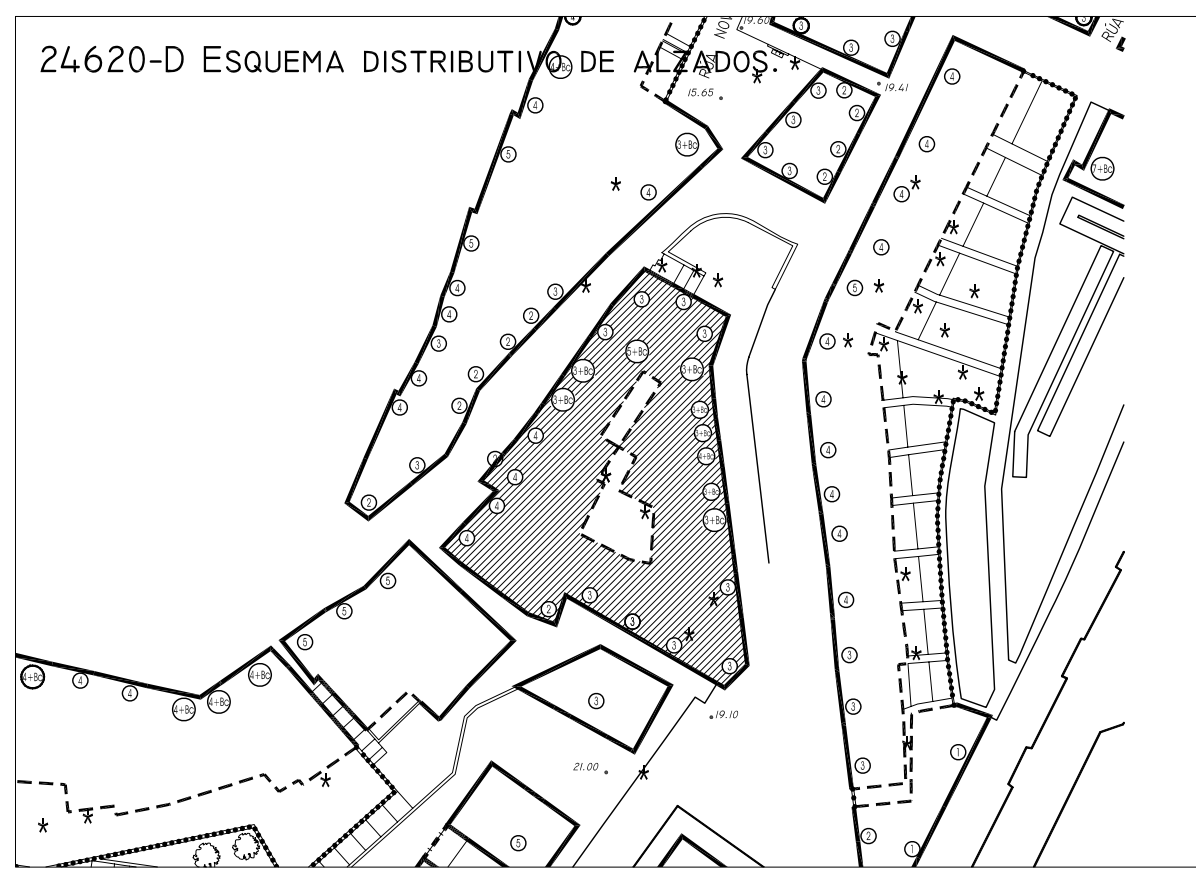
10 4.30/8.86

Rúa dos Poboadores



10 7.92/7.80 09 2.97/9.72 08 1.89/9.34 07 7.54/10.35 06 4.61/10.30 05 3.85/11.45 04 2.75/9.16 03 2.67/9.50 02 6.43/9.25 01 6.58/8.65

Rúa dos Poboadores




24620-D ESQUEMA DISTRIBUTIVO DE ALZADOS



Rúa dos Poboadores

Nº PARCELA FRENTE PARCELA/ALTURA DE CORNIXA (COTAS EN METROS)

 <p>PLAN ESPECIAL DE PROTECCIÓN E REFORMA INTERIOR CASCO VELLO DE VIGO</p>	FASE: APROB. DEFINITIVA
	PLANO Nº 4.4-D
<p>PLANOS DE ORDENACIÓN TÍTULO: ALZADOS PROPOSTOS. COUZADA 24620</p>	ESCALA 1/200
<p>CONSULTORA GALEGA, S.L. RÚA SAN MARTÍN, 3-B 36002 PONTEVEDRA T.F. 986 85 89 57 FAX. 986 85 89 58 E-mail: consultora@cons.torogalega.com</p>	DATA: DECEMBRO 2006